



The Mickle Pod (sleeps 2 adults) **HIKER/BIKER POD**

Internal floorspace **3.72m²**

Easy clean. Ideal for the muddier customers – Walkers - Mountain Bikers - Climbers

Can be **pressure washed out** ! Anchor points fitted at all corners.



Secure bike lock bracket fitted as standard.

Dimensions:

External: 1.50m (4' 10") W x 2.40m (7' 10") L

side walls straight up by 600mm (1' 11") H then roof is applied, this is to maximise the internal space.

Door: 1.10m (3' 7") H x 500mm (1' 6") W.

Pvc window: In rear of pod 460mm (18") H x 300mm (12") W (non-opening).

Internal colour: Smooth as standard.

External: Smooth topcoat/rough stipple as standard

Roof: Artificial grass as standard

Foam fibreglass panels used: 25mm (1") thick, then infused with high grade fibreglass matt & resins.

Floor: 50mm (2") as standard to give a cosier sleep.



Non electric, (solar or electric pack can be added at additional cost)

1 x Front and rear air vent

Door handles - Black cast, lockable with key on outside (turn buckle lock inside for safety)

2 x Hinges black cast iron

1 x Smoke detector

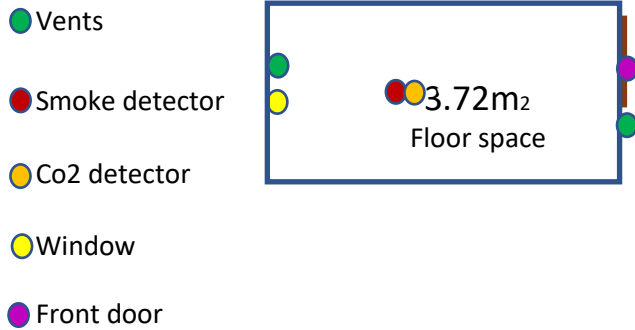
1 x Bike security side lock bracket **bonded** to pod side wall



Pennine Pods Ltd, High Hesket Business Park, High Hesket, Carlisle, Cumbria. CA4 0BW

T: 016974 75713 / 0333 0147778 W: www.penninepods.co.uk E: info@penninepods.co.uk





- We only use **HIGH GRADE** resins, top-coats, fibreglass matt and dense foam boards.
- **HEAT** RETENTION of our pods is the highest in the UK.
-

Our Composite board "system"



- Foam/Fibreglass Barrier Coating.
- High Grade Fibreglass Matt.
- High Grade Resins.
- High Grade Topcoat

