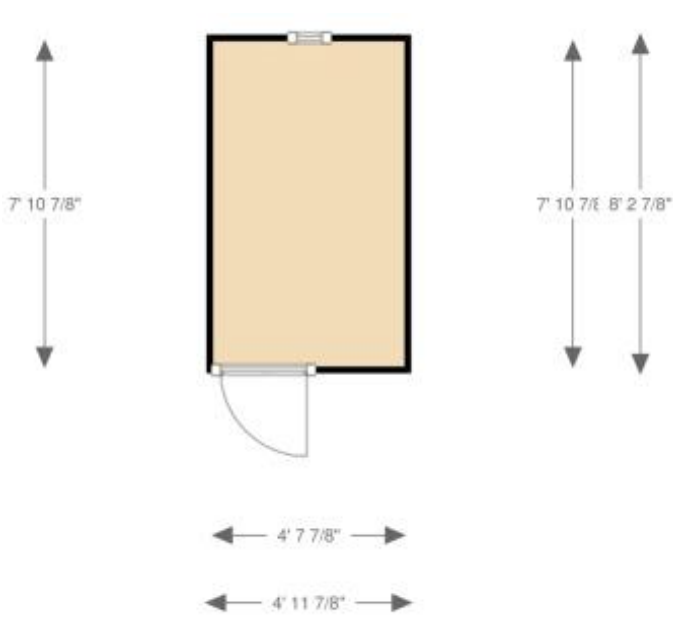


Floorplan specifications overview.

The Mickle (Hiker-Biker Pod)

(Electric or Solar as standard)

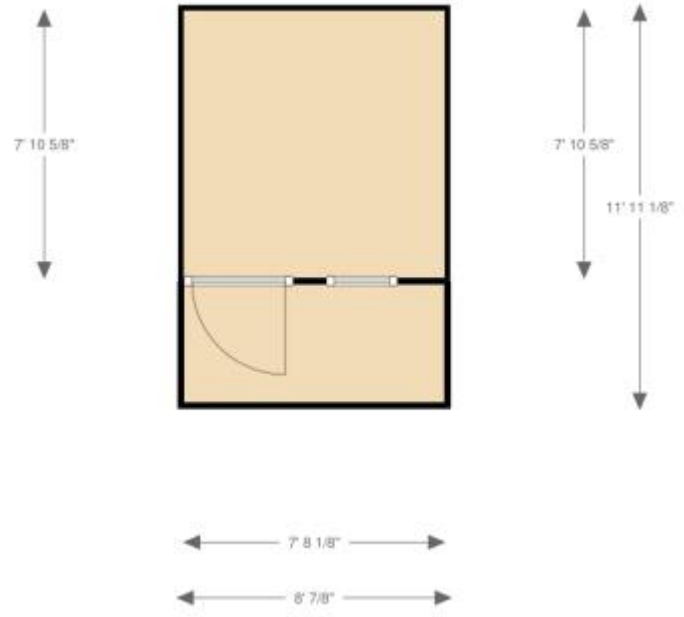
Pod dimensions: **1.50m (4' 10") W x 2.40m (7' 10") L**



The Little Dun

(Electric pack fitted as standard).

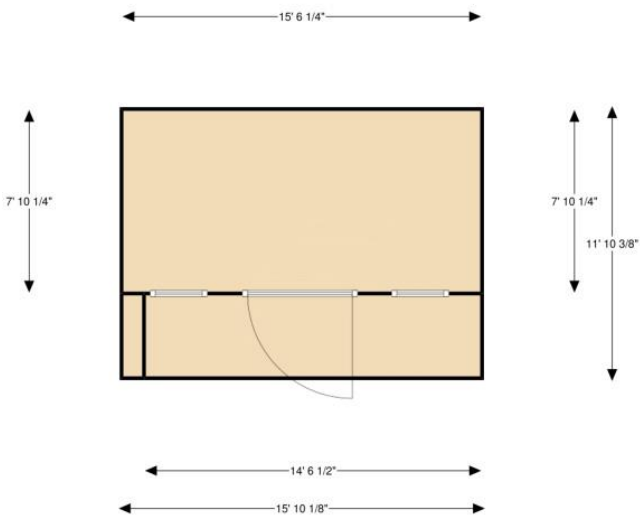
Pod dimensions: **2.40m (7' 10") W x 3.60m (11' 10") D**



The Penhill

(Electric pack fitted as standard).

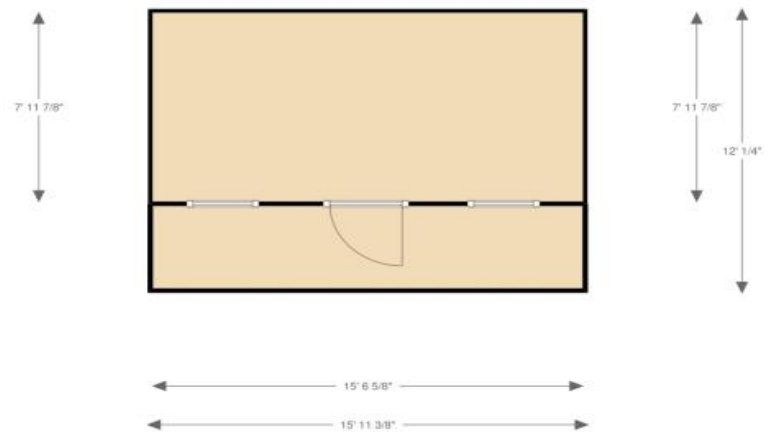
Pod dimensions: **4.90m (15' 10") W x 2.40m (7' 10") D**



The Ingleborough

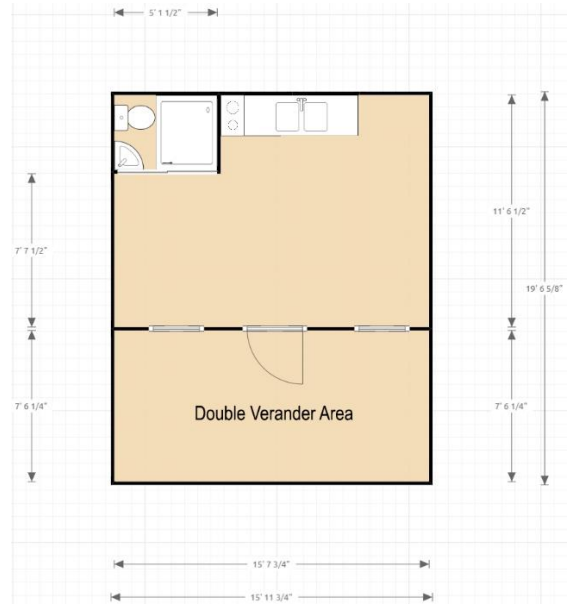
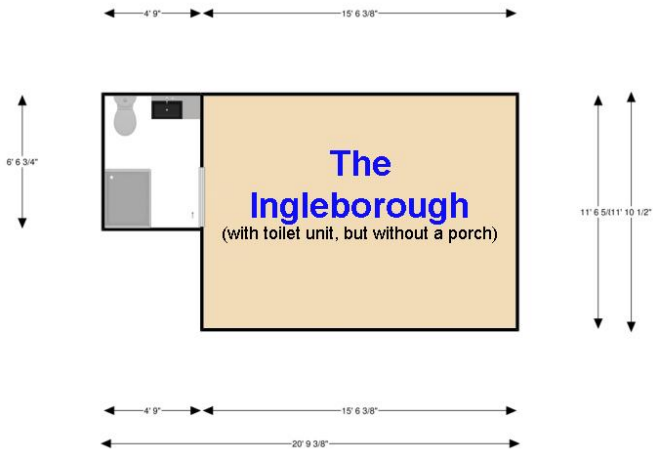
(Electric pack fitted as standard).

Pod dimensions: **4.80m (15' 10") W x 3.60m (11' 10") D x 2.40m (7' 10") H in centre point.**

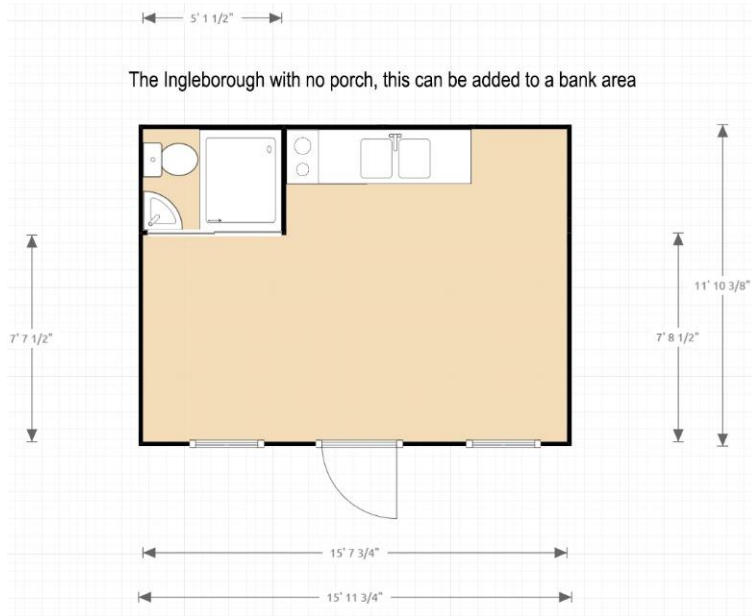


The Ingleborough (Electric pack fitted as standard)

Pod dimensions: (varied) layouts and internal options.



Below: **Ingleborough** without porch, but with bathroom.
Kitchen is an additional cost.



Mud Hut (Electric pack fitted as standard)

Pod dimensions: **3.60m (11' 10") W x 4.80m (15' 10") D**

