



MUD HUT (sleeps up to 2-4 adults + 2 children in comfort)

Internal floorspace **15.82m²**



Dimensions:

External: **3.60m (11' 10") W x 4.80m (15' 10") D.**

Door: 1.80m (6') H x 900mm (3') W with disabled access

Living room windows: uPVC 2 x 600mm (1' 6") W x 900mm (3') D (both open).

Bathroom: full wet-room 1.50m (5') W x 1.20m (4') D.

Bathroom window: 300mm (1') W x 600mm (2') D (opening).

Internal: Daub textured finish (colour to be agreed).

External: Brown daub textured finish.

Roof: Twig thatched.

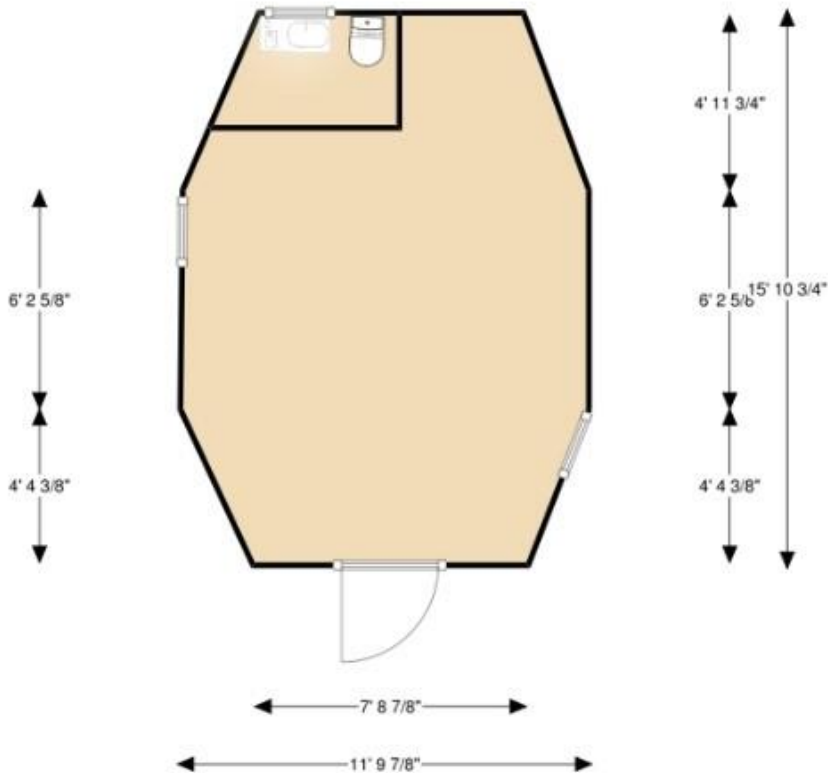
6 x anchor points fitted at all corners

Foam fibreglass panels used: 50mm (2") thick, then infused with high grade fibreglass matt & resins.

Additions:

Double mezzanine bedroom.

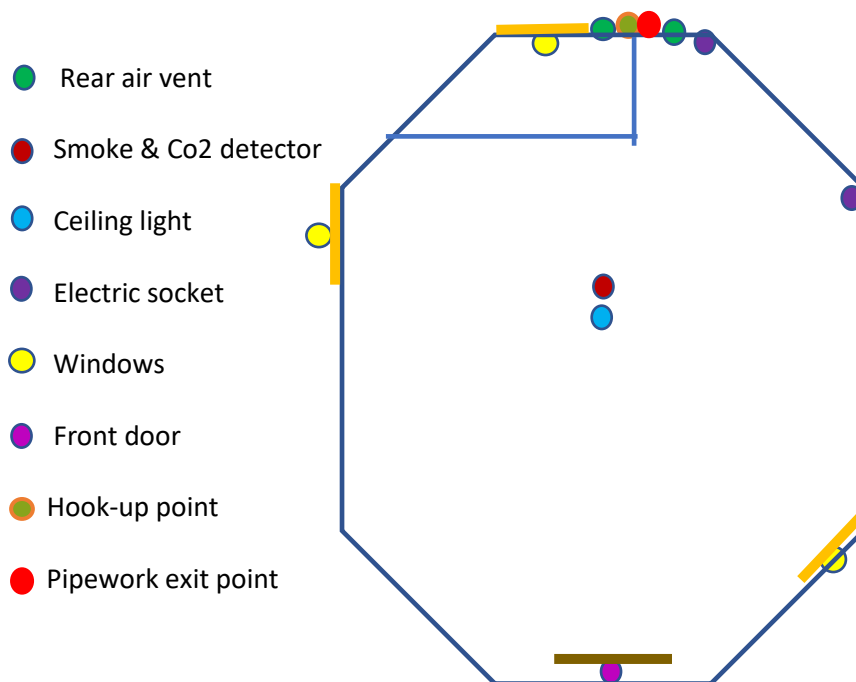
Kitchen area.





- 2 x Rear air vents.
- 1 x Smoke & Co2 detector (hard wired).
- 2 x Door handles. Black cast, lockable with key on outside, turn buckle lock inside for safety.
- 2 x Hinges black cast iron.
- 1 x Internal led ceiling light.
- 1 x Led Bathroom light.
- 1 x Opaque bathroom door.
- 1 x Double flush toilet. (Full wet-room bathroom as standard)
- 1 x Washbasin.
- 1 x Electric shower unit.
- 1 x Shower cut-off switch.
- 2 x Internal double sockets with 2 x USB ports.
- 1 x Consumer unit, 5 trip fuses and RCD main trip.
- 1 x Porch led light.
- 1 x External (16amp) hook-up-point to rear.
- 1 x Electric panel wall heater (as standard).

All pipework and hook-up point will be at one central point to rear of unit.



We have one of the highest **HEAT** retention panels in the UK.
BESPOKE STRUCTURES AVAILABLE.

