



The Ingleborough Unit (sleeps 4-6 adults or 4 adults + 2 children in comfort)

Internal floorspace **11.89m²** (Anchor points fitted at all corners)



Dimensions:

External: 4.80m (15' 10") W x 3.60m (11' 10") D x 2.40m (7' 10") H in centre point.

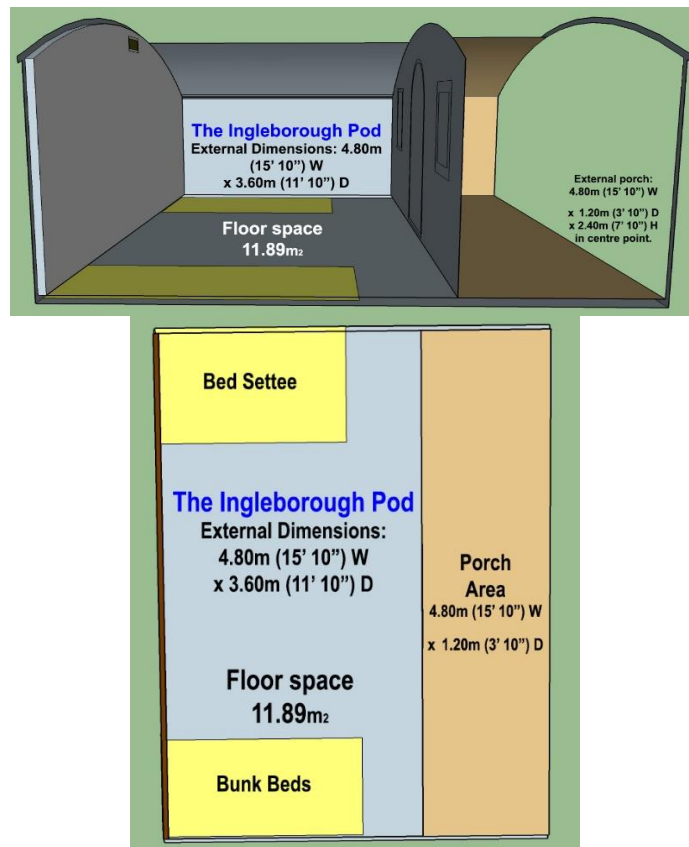
Door: 1.80m (6') H x 900mm (3') W (arch topped) foam/fibreglass or uPVC fully glazed door.

Windows: uPVC 1st = 400mm (1' 4") W x 600mm (2') H, 2nd = 600mm (2') W x 800mm (2' 7") H (only the larger one opens).

1 x side wall 1.80m (6') H. 2nd side wall 1.50m (4' 10") H

External porch: 4.80m (15' 10") W x 1.20m (3' 10") D x 2.40m (7' 10") H in centre point.

Internal Wet-Room: 1.52m (5') x 1.21m (4') Includes shower, sink, toilet and expelair c/w waterproof wall panelling as standard





Internal: Pine tongue & groove cladding or various styles of panelling as standard.

External: Textured stipple finish.

Roof: Thatched as standard

Foam fibreglass panels used: 50mm (2") thick, then infused with high grade fibreglass matt & resins
Door handle x Black cast, lockable with key on outside, turn buckle lock inside for safety.

2 x Hinges black cast iron.

1 x Rear air vent.

1 x Smoke detector.

1 x Co2 detector.

2 x Internal led ceiling lights.

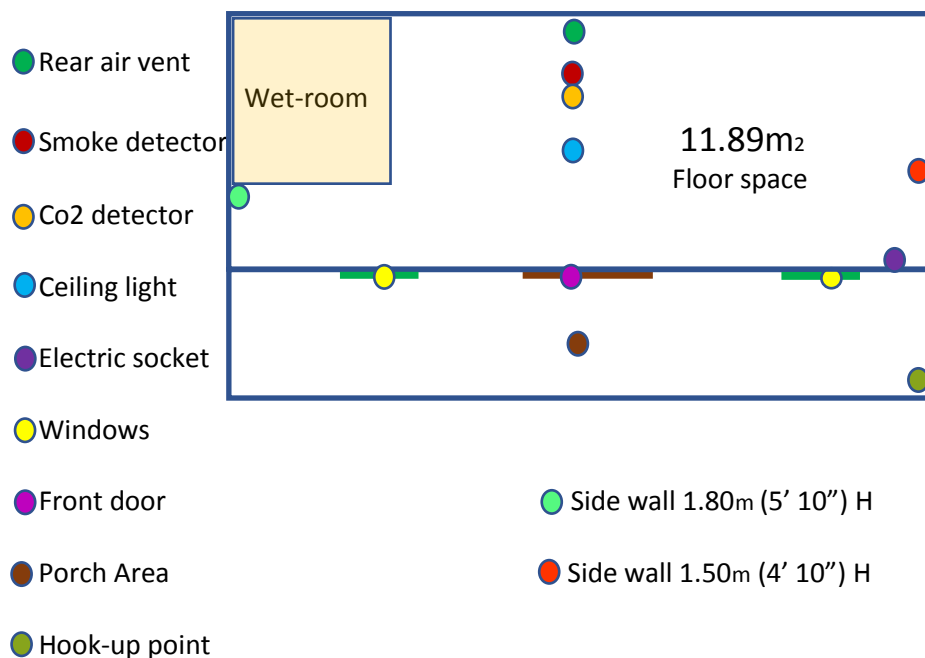
1 x Internal double socket with 2 x USB ports.

1 x Consumer unit, 4 trip fuses and RCD main trip.

1 x Porch led light.

1 x External (16amp) hook-up-point.

1 x Electric panel wall heater (as standard).



A kitchenette area can be added if required at additional cost.

HEAT RETENTION of our pods is one of the highest in the UK.

BESPOKE STRUCTURES AVAILABLE.

Contact us and let us make your vision or idea become a reality.

